

Double wall insert

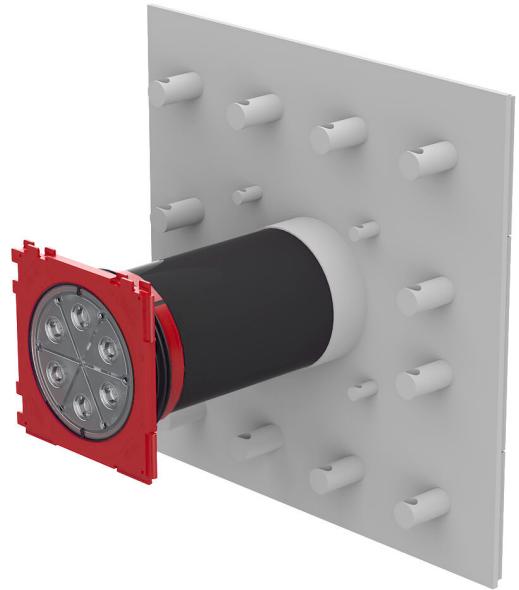
for setting in concrete, for black tank with fixed/loose flange

HSI150 FLFE/X DIN18533 W2-E



- **Quality mark: sealed ex works. Option to check for accidental or unauthorised opening of the closing cover**

For cable entries or the connection of cable ducts in buildings with waterproof sheeting or approved plastic-modified thick coatings (PMBC). A transition from the building seal to the entry is created with the fixed/loose flange construction. Sealing is according to DIN 18533 (black tank).



Picture may differ from selected product

FACTS

Advantages:

- Available as a package with multiple entries arranged horizontally or vertically
- Special solutions for recesses or core drills, inclined installation on request

Dimensions:

- 555 x 555 mm, for package configuration each additional entry + 250 mm

Properties:

- Manufactured to DIN 18533

Application range:

- Water exposure class DIN 18533: W1-E, W2.1-E and W2.2-E

Material:

- Fixed/loose flange: rust-free stainless steel V2A (AISI 304L) or V4A (AISI 316L)
- Sealing flange for system seal connection: Plastic flange made of glass fibre reinforced plyamide
- Cable entry: ABS with TPE 3-ribbed seal
- Adapter pipe: PVC
- Closing cover: ABS with TPE seal

Tightness:

- gastight and watertight

DIN:

- Water exposure class DIN 18533: W1-E, W2.1-E and W2.2-E

PICTURES

